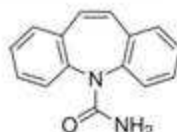


PHOSPHOLIPID DEPLETION PLATE

Compounds: Carbamazepine



PHOSPHOLIPID DEPLETION METHOD:

(Chastky Phospholipid depletion Plate, 2 mL/well, 0.2µm, Catalog #OC21PC-045-A)

Load:

300 µL of acetonitrile first, followed by 100 µL of spiked human plasma (250 ng/mL). Vortex for 2 minutes



Elute:

Apply a gentle stream of positive pressure until all solvent passes through. Inject directly into HPLC

HPLC METHOD:

Column:

Orochem Reliasil C8 HPLC column 4.6x50 mm, 3 µm.

Part number:

R3BI-102

Mobile phase:

Water/Acetonitrile 65:35

Flow rate:

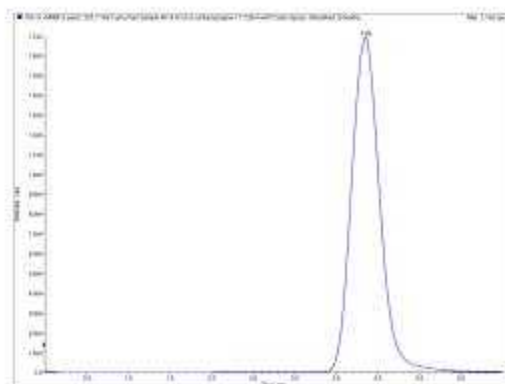
0.5 mL/min

Injection volume:

20 µL

Retention Time:

3.86 min



MS/MS CONDITIONS:

Mass spectrometer: API3000

Ion source: Turbo Ion spray

Polarity: Positive

Scan mode: MRM

Primary, Q1: 237.1, Q3: 194;

Secondary, Q1: 237.1, Q3: 220.0

IS: 4000

Temp.: 500

DP: 20

CAD: 12

CE: 25

CXP: 10

RESULTS:

Recovery (CV%): 98.3% (3.4%)